

# SOUTH SHETLAND ISLANDS AND ANTARCTIC PENINSULA

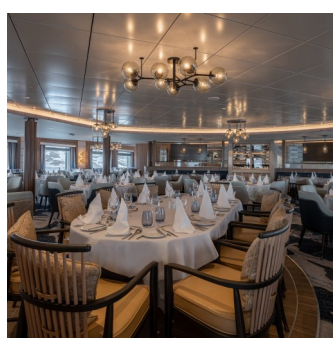
January, February, March 2026 - 9 Nights onboard



Ocean Albatros



Short Excursions in Zodiacs



Main Restaurant



Yacuzzi

Storyed and sought for centuries, the great White Continent beckons intrepid modern-day explorers from all over the world. Experience incredible wildlife, stunning scenery and gigantic icebergs in action-packed days on the Last Continent on our classic 10-day voyage to the Antarctic Peninsula. **Itinerary.**

Join us onboard our purpose-built, ice-class expedition vessels, Ocean Victory and Ocean Albatros to experience the majesty and wonder of Earth's last frontier up close and personal. Our vessels enable us to get closer to nature, with a fleet of Zodiac landing craft, a team of experienced expert expedition guides, and the Antarctic Peninsula as our spectacular destination.

## ITINERARY

**Day 1:** Ushuaia, Argentina, embarkation

**Day 2-3:** At Sea - Crossing the Drake Passage Southbound

**Day 4-7:** South Shetland Islands & the Antarctic Peninsula

**DAY 8-9:** At Sea - Crossing the Drake Passage Northbound

**DAY 10:** Back to Ushuaia and disembarkation



## HIGHLIGHTS

- First-ever Halal-certified cruise to Antarctica
- Visit the Antarctic South Shetland Islands
- Explore the Antarctic Peninsula
- Top wildlife destination in the world with penguins, seals, whales and albatrosses
- Many zodiac excursions and landings
- Strong expedition ship that enables access to remote areas
- Lectures, photo workshops and wildlife spotting

## INCLUSIONS

- 10-day cruise with accommodation in a shared double stateroom featuring ensuite facilities
- Embarkation shuttle transfer to the vessel from Ushuaia city centre
- Shuttle transfer after disembarkation from the ship to Ushuaia city centre or airport
- All Zodiac landings and excursions, as per itinerary, guided by our Expedition Team
- Expedition parka
- Rubber boots loan scheme
- Briefings and lectures by our Expedition Leader and Team
- English-speaking Expedition Team
- Full board on the ship - breakfast, lunch, dinner and snacks
- Complimentary house wine, beer and soda (selected labels and brands, served at our a-la-carte dinners)
- Free tea and coffee available 24 hours
- Taxes and landing fees
- Welcome and Farewell Parties
- Digital visual journal link distributed after the voyage, including voyage log, gallery, species list and more!

# SOUTH SHETLAND ISLANDS AND ANTARCTIC PENINSULA

January, february, March 2026 - 9 Nights onboard



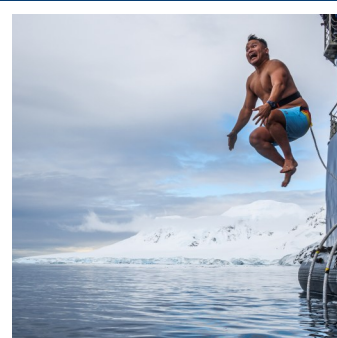
Spa



Kayaking



Panorama Restaurant



Yacuzzi

## EXCLUSIONS

- Extra excursions and activities not mentioned in the itinerary
- Single room supplement and stateroom upgrades
- Meals not on board the ship
- Beverages (other than coffee and tea)
- Tips for the crew (we recommend USD 16 per person per day)
- Personal expenses (e.g. Albatros Polar Spa services, Albatros Ocean Boutique purchases)
- Anything not mentioned under 'Inclusions'

## OPTIONAL EXCURSIONS

**Photography Program:** The Photography Program is a unique opportunity for photographers to capture the beauty of Antarctica and its wildlife while cruising on an expedition ship. The program is designed to provide photographers with the skills, knowledge, and assistance with guidance from our appointed polar photography experts.

**Kayaking:** Glide through the waters and take in the royal grace of the icebergs, see the varied birds and seals, and maybe even the whales in their natural habitat under the supervision of experienced kayak guides, who will ensure your safety during each outing.

## CABINS

- **Category G, Single room:** Standard single Stateroom onboard, located on deck 3. This is a conveniently located State Room close to the Mudroom which facilitates access to the Zodiacs during embarkation and disembarkation to begin your adventures.
- **Category F, Triple Porthole - 18-22 m2.** There are four Triple Staterooms featuring portholes, all with private en-suites. Located on Deck 3, they're close to the mudroom and loading platforms.
- **Category E: French Balcony Stateroom - 14 m2.** The French Balcony Stateroom is a standard Stateroom with an one queen-sized bed (150x200 cm), floor-to-ceiling windows, and a bathroom. All French Balcony are located on Deck 7.
- **Category D: Albatros Porthole - 13-22 m2.** Standard State Rooms all have a double bed or 2 single beds and a bathroom. The State Rooms are located on deck 3 and 4.
- **Category C: Balcony Stateroom - app. 18-22 m2.** This type of Stateroom is located on decks 4 & 6. They have a balcony, a double bed or two single beds, a bathroom.
- **Category B: Balcony Suite approximately - 30-32 m2.** Ocean Albatros has 2 Balcony Suites on board located on deck 6. The suites feature double or twin beds and a work desk, bathroom, and a large balcony. The balcony suites can host 2 people.
- **Category A: Junior suite - 36-39 m2.** The 4 junior suites aboard Ocean Albatros have a great view from their location high up on the ship on deck 7.. The suites feature a double bed or twin beds, sofa bed, seating area, a spacious bathroom and a private balcony. The suite can accommodate up to 3 people.
- **Premium Suite: Premium suite - 42 m2.** The second largest of all the staterooms on board the Ocean Albatros is the Premium Suite. This 2-bedroom suite features a double bed (or twin beds), a sofa bed, table and chair, a balcony and a spacious bathroom. Located on deck 4.
- **Family Suite: Family suite - 50 m2.** The largest of all the staterooms is the Family Suite. The Double-Bedroom, Family Suite is located on Deck 7, accommodating up to 5 people on two double beds and a sofa bed.



# SOUTH SHETLAND ISLANDS AND ANTARCTIC PENINSULA

January, february, March 2026 - 9 Nights onboard



Category G—Single Room



Category F: Triple



Category E—Double



Category D —Twin / Double



Category C —Twin / Double



Category B—Double



Category A—Suite



Category A—Suite



Category A—Suite



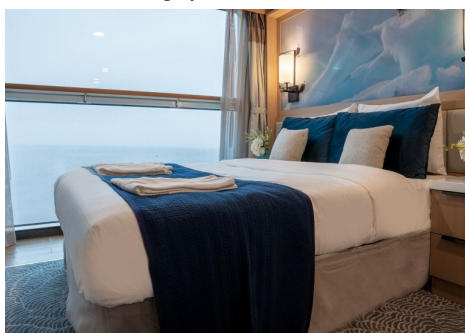
Category A—Suite



Category A—Suite



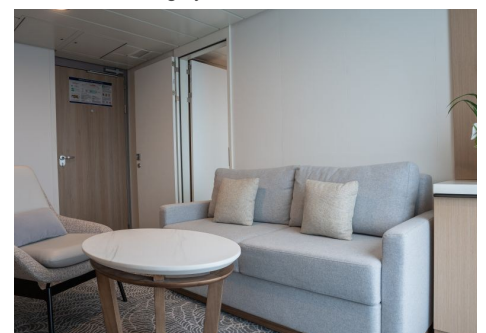
Category A—Suite



Family Suite



Family Suite



Category A—Suite